

Table of Contents

[Screenshot](#)

[External Links](#)

[References](#)

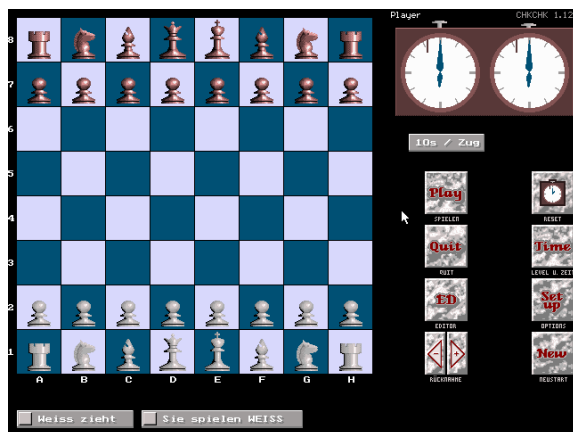
[What links here?](#)

[Home](#) * [Engines](#) * **Check Check**

Check Check,

a commercial chess program by [Wolfgang Delmare](#), developed in the late 80s and early 90s. It was a 16-bit [8086](#) and later 32-bit [x86](#) program running on [PCs](#) under [MS-DOS](#) with a pleasant [GUI](#). Check Check played the [Tenth World Microcomputer Chess Championship 1990](#) in [Lyon](#), and the first three [International Paderborn Computer Chess Championships](#), [IPCCC 1991](#), [IPCCC 1992](#), and [IPCCC 1993](#), and was the first commercial chess program using own three and four men [Endgame Tablebases](#), spending the "huge" amount of 16MB [hard disk](#) space.

Screenshot



Check Check Screen [\[1\]](#)

External Links

- [Check Check's ICGA Tournaments](#)

- [Check Check Grundpaket 3,5"](#) from [Schachversand Niggemann](#) (German)

References

1. [^](#) [Septober - Computerschach](#) by [Herbert Marquardt](#)

What links here?

Page	Date Edited
Aegon 1992	Jan 22, 2017
Aegon 1993	Mar 26, 2017
Aegon 1994	Mar 26, 2017
Aegon 1995	Apr 6, 2017
Bernie	Oct 31, 2015
Check Check	Jan 8, 2016
Engines	Mar 10, 2018
Experimental	Jan 8, 2016
IPCCC 1991	Jun 9, 2016
IPCCC 1992	Jan 2, 2015
IPCCC 1993	Nov 1, 2016
WMCCC 1990	Oct 27, 2016
Wolfgang Delmare	Jan 25, 2016

[Up one Level](#)