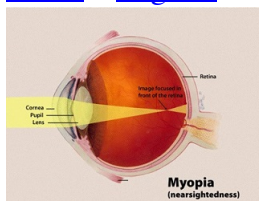


[Home](#) * [Engines](#) * **Myopic**



Myopia ^[4]

Myopic, a simple [open source chess program](#) for small systems by [Steven Edwards](#) written in [C++](#), released under the [Creative Commons license](#). Myopic is suited for the [Arduino Mega](#) ^[1] with the optional addition of a [SparkFun](#) 8x8 [RGB LED](#) backpack ^[2] as move indicator output device. Otherwise, all I/O is gated through a single pair of routines that currently use the default [serial](#) I/O pins ^[3].

Table of Contents

[Description](#)

[Download](#)

[See also](#)

[Forum Posts](#)

[External Links](#)

[References](#)

[What links here?](#)

Description

The board is represented by a [vector of 64](#) chessmen including vacant square chessmen. Search is plain [alpha-beta](#) inside the [iterative deepening](#) loop with [leaf evaluation](#) considering [material balance](#), [pawn placement](#), [pinned pieces](#) and [piece mobility](#), and scaled [king center distance](#) in as bonus in the [middlegame](#) and penalty in the [endgame](#).

Download

[myopic.tar](#)

- [Details](#)
- [Download](#)
- 732 KB

See also

- [Arduino](#)
- [CookieCat](#)
- [Disease](#)

Forum Posts

- [Chess for the Arduino](#) by [chessplayer](#), [Arduino Forum](#), December 06, 2009
- [Myopic, a new Creative Commons chess program](#) by [Steven Edwards](#), [CCC](#), May 22, 2010
- [Re: SAN Move Disambiguation -- looking for test position](#) by [Steven Edwards](#), [CCC](#), July 11, 2010 » [SAN](#)
- [For a limited time, two sources](#) by [Steven Edwards](#), [CCC](#), January 22, 2013 » [CookieCat](#)

External Links

- [myopic - Wiktionary](#)
- [Myopia \(disambiguation\) from Wikipedia](#)
- [Myopia from Wikipedia](#)

References

1. [^](#) [Myopic, a new Creative Commons chess program](#) by [Steven Edwards](#), [CCC](#), May 22, 2010
2. [^](#) [LED Matrix - Tri Color - Large - COM-00683 - SparkFun Electronics](#)
3. [^](#) [Chess for the Arduino](#) by [chessplayer](#), [Arduino Forum](#), December 06, 2009
4. [^](#) [Diagram of Myopia](#) in the [human eye](#), 2005, [National Eye Institute](#), [Myopia from Wikipedia](#), [Wikimedia Commons](#)

What links here?

Page

Date Edited

Page	Date Edited
Arduino	Feb 21, 2018
CookieCat	Nov 15, 2016
Engines	Mar 10, 2018
Myopic	Nov 11, 2016
Steven Edwards	Aug 26, 2017

[Up one level](#)