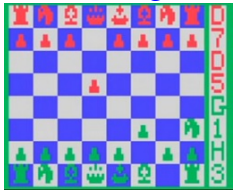


[Home](#) \* [Engines](#) \* **SABA Videoplay 20**



SABA Videoplay 20 <sup>[1]</sup>

**SABA Videoplay 20**, (Videocart Nr. 20: Schach) a [ROM cartridge video chess game](#) by the now defunct German electronics manufacturer [SABA](#) for the [Fairchild Channel F](#) and licensed [video game consoles](#) with [F8](#) processor, such as the *SABA Videoplay* <sup>[1]</sup>. The chess cartridge was first released in 1979 <sup>[2]</sup>. The game, according to Torsten Othmer, an exclusive in-house development of SABA <sup>[3]</sup>, today available as ROM data and [disassembled](#) source code, is playable under the [Multi Emulator Super System MESS](#) <sup>[4]</sup>.

## Table of Contents

[See also](#)

[External Links](#)

[References](#)

[What links here?](#)

## See also

- [Boris](#)
- [Chess Champion MK I](#)
- [Chess Champion Pocket Chess](#)
- [CompuChess](#)

## External Links

- [Fairchild Channel F - Wikipedia](#)
- [Fairchild Channel F SABA cart 20: Schach \(Chess\)](#), [YouTube](#) Video

- [Disassembly: SABA Videoplay 20 - veswiki](#) playable in [MESS](#) under [Channel F](#)
- [Saba #19 and #20 \(Fairchild F Imports\)](#)
- [Übersicht aller SABA Videoplay Spielmodule](#) with Images of SABA Videoplay 20, from [SABA Videoplay - Debüt für die Steckmodule in Deutschland](#) by [Torsten Othmer](#), October 2009 (German)

## References

1. [^ SABA Videoplay - Debüt für die Steckmodule in Deutschland](#) by [Torsten Othmer](#), October 2009 (German)
2. [^ schach 1979 saba 20, download this ROM for Fairchild channel F - The Game Archives](#)
3. [^ Videocart Nr. 20: Schach](#), Game Info as given by [Torsten Othmer](#), translated from German "By far the most elaborate game for the Videoplay. This module is an exclusive in-house development of SABA and was officially sold only in Germany!"
4. [^ Disassembly: SABA Videoplay 20 - veswiki](#) playable in [MESS](#) under [Channel F](#)
5. [^](#) Capture from the [Fairchild Channel F SABA cart 20: Schach \(Chess\)](#), [YouTube](#) Video

## What links here?

Page	Date Edited
<a href="#">Chess Champion Pocket Chess</a>	Sep 19, 2014
<a href="#">Engines</a>	Mar 10, 2018
<a href="#">Fairchild F8</a>	Jul 31, 2015
<a href="#">SABA Videoplay 20</a>	Sep 19, 2014

[Up one level](#)